



Chicago Pneumatic



People.
Passion.
Performance.

Concrete Equipment

YOUR PARTNER FROM START TO FINISH

For concrete projects, Chicago Pneumatic concrete equipment is with you every step of the way. From vibration and leveling to finish and cutting, CP offers a selection of quality equipment that helps you get the job done right.

CP doesn't overload its concrete equipment with extra features you don't need and will rarely use. Instead, CP concrete equipment is all about getting the day-to-day work done reliably, efficiently and affordably. It works hard like you do, and also like you it shows up ready to work the next day.







One Brand Many Applications

From walls to floor slabs, CP's concrete line has a solution for every step of the job. And every product offers the reliable performance, user-friendly operation and low maintenance that add up to long-term productivity.

We have included the following guide to help you select the best CP equipment for the job you need to do. Your CP distributor is also a resource for more information.



MARKET SEGMENT	Mechanical Pokers	Electric Pokers	Pneumatic Pokers	Bull Float	Hand-Held Screed	Power Trowels	Floor Saws
Civil Engineering	—	•	•	—	—	—	•
Contractor	◦	•	•	•	•	•	•
Rental	•	•	•	•	•	•	•
Housing	•	•	•	•	•	•	•
Flooring	•	•	•	•	•	•	•
Precast	◦	•	•	—	—	—	—

• Suitable ◦ Less Suitable — Not Applicable



STEP 1: Vibration

Vibration removes the air voids from freshly poured concrete to increase its density for stronger finished concrete. Depending on the depth and slump of the concrete, this can be accomplished with a poker or screed. CP offers pokers, along with drive units, frequency converters, generators and air compressors. CP handheld screeds also provide vibration for concrete slabs less than 150 mm (5.9 in) deep.

STEP 2: Leveling

In most situations, the concrete must be leveled to create an even surface. Screeding accomplishes this task. CP offers a hand-held screed for use on concrete that has been vibrated with a poker, as well as a bull-float screed for deeper vibration and leveling in one step. In addition, CP offers leave-in-place screed rails that save time by eliminating the need to pre-level poured concrete before using a screed.

STEP 3: Finishing

Once the concrete reaches a plastic state several hours after pouring, power trowels are used to remove irregularities from the screeded surface, create a smooth finish and further strengthen the concrete. A screed produces a rougher finish, while power trowels can produce a smoother finish using a floating disk or troweling blades. From edging to large areas, CP power trowels can help your crew save time while creating the long-lasting, durable finish you require.

STEP 4: Cutting

After the concrete is dry, the final step is to cut expansion joints to control where the concrete will crack as the soil underneath expands and contracts. CP cutting saws are designed for operator comfort and performance, offering a maximum cutting depth of 150 mm (5.9 in) to fit most job requirements. They can also be used in asphalt cutting for road maintenance, as well as an alternative to jack hammers.



Purpose	Process	Concrete State	Pokers	Bull Float	Hand-Held Screed	Power Trowels	Floor Saws
Strengthen the concrete by removing the air voids	Internal vibration	Wet	•	–	–	–	–
Strengthen the concrete by removing the air voids	Surface vibration down to 150 mm (5.9 in)	Wet	–	•	–	–	–
Level the surface according to specifications	Surface leveling	Wet	–	•	•	–	–
Remove irregularities from the screeded surface and strengthen it (compaction)	Floating	Plastic	–	–	–	•	–
Give the surface a smooth finish and high strength	Trowelling	Plastic	–	–	–	•	–
Control where slab will crack when drying	Cut expansion joints	Dry	–	–	–	–	•

• Suitable – Unsuitable

The Right Tools for Every Task



CONTRACTORS

Buildings
Stadiums
Parking
Foundations



CIVIL ENGINEERING

Tunnels
Bridges
Harbors
Foundations



FLOORING

Parking
Warehouse
Industrial Floors
Slabs



PRECAST

Pre-Stressed Concrete
Beams
Forms
Pre-Fabricated Elements

APPLICATIONS	Mechanical Pokers (VPM)	Electric Pokers (VPE)	Pneumatic Pokers (VPP)	Leveling Screeds (LBG)		Power Trowels (STG)		Floor Saws (SCG)
				Bull Float	Hand-Held Screed	Edger	Capacity	
Concrete Types								
Low Slump	—	•	•	•	◦	•	•	•
Medium Slump	•	•	•	•	•	•	•	•
High Slump	•	•	•	•	•	•	•	•
Applications								
Columns	◦	•	◦	—	—	—	—	—
Beams	◦	•	◦	—	—	—	—	—
Walls	◦	•	◦	—	—	—	—	—
Floors	•	•	•	•	•	•	•	•
Bridges	◦	•	•	◦	•	◦	◦	—
Tunnels	◦	•	•	◦	◦	◦	◦	—
Foundations	—	•	•	—	—	—	—	—
Retaining Walls	◦	•	•	—	—	—	—	—
Parking	•	•	•	•	•	•	•	•
Structures	◦	•	•	—	—	—	—	—
Harbors	◦	•	•	•	•	•	•	—
Dams	—	◦	◦	—	—	—	—	—
Precast Form	◦	•	•	—	—	—	—	—
Slip Form	◦	◦	◦	—	—	—	—	—
Pre-Slab Form	—	•	◦	—	—	◦	◦	—

• Suitable ◦ Less Suitable — Not Applicable

POKER SELECTION	Poker Diameter	Theoretical Vibration Capacity
Columns, thin beams, thin wall sections, low-volume jobs, areas with high concentrations of reinforcement	25-35 mm (1-1.4 in)	1.5-6 m³/h (50-210 ft³/h)
Floor slabs, beams, low-volume foundations, edge vibration of slabs before screeding	35-45 mm (1.4-1.8 in)	6-10 m³/h (210-350 ft³/h)
Large concrete pours, bridges, retaining walls, floor slabs	45-75 mm (1.8-3 in)	10-35 m³/h (350-1240 ft³/h)

These examples show what CP concrete equipment can do at every step in the process to ensure you get the results you want from start to finish.

STEP 1: Vibration



Before: The concrete is poured into the form.



After: The concrete has been vibrated with a CP poker and air voids have been removed.

STEP 2: Leveling



Before: The concrete is rough from internal vibration.

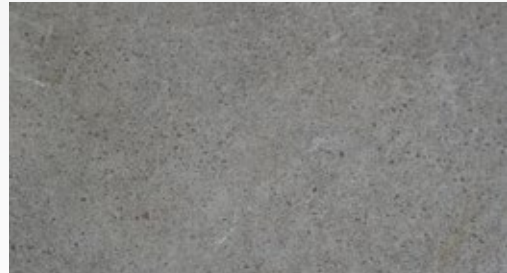


After: The concrete surface remains rough, but has been leveled using a CP screed.

STEP 3: Finishing



Before: The concrete surface is rough but level.



After: The surface has been smoothed to the desired finish using a CP power trowel.

STEP 4: Cutting



Without: The concrete is subject to substantial, uncontrolled cracking.



With: Cracks are controlled, because the concrete has been cut with a CP floor saw to allow for expansion and contraction.



TIP

Mechanical pokers are easy to maintain and mobile, thanks to their diesel or gasoline drive units.

Reliable, Versatile and Easy to Use

CP's VPM mechanical pokers offer a simple yet efficient solution for most work sites.

Made with high-quality steel parts, VPM mechanical pokers are built to last and provide high acceleration inside medium- to high-slump concrete. With easy servicing and a long hose, they're an excellent choice for mid-sized construction sites. Use with VDD 3000 or VDG 3200 drive units.

EXCELLENT SUSTAINED VIBRATION

Conical steel pendulum concentrates vibration in one line for less stress on the pendulum and better sustained vibration inside the concrete. This design reduces the loss of vibration when the poker is immersed and helps extend the unit's service life.

LONG REACH

All units come with a 5 m (16.4 ft) hose that has a dual vulcanized steel layer and a flexible multi-spiral steel shaft.

LOW H/A VIBRATIONS

The pendulum design kicks four times per revolution, converting low rpm in the hose to high vpm in the head. This keeps vibration in the concrete, not the operator's hands.

LOW MAINTENANCE

Greased-for-life bearings reduce maintenance requirements.

LONG LIFE

Hardening treatment on pendulum shafts and poker heads allows long service life.

MECHANICAL POKERS	VPM 26	VPM 36	VPM 46	VPM 56
Tube Diameter mm (in)	25 (1.0)	35 (1.4)	45 (1.8)	55 (2.2)
Tube Length mm (in)	295 (11.6)	330 (13.0)	375 (14.8)	390 (15.4)
Tube Weight kg (lb)	0.5 (1.0)	1.8 (4.0)	1.9 (4.2)	2.0 (4.4)
Frequency vpm	12,000	12,000	12,000	11,300
H/A Vibrations m/s ² *	2.0	5.2	6.9	8.2
Sound Power dB(A)*	77.5	82	87.4	90
Part Number	4812 0505 62	4812 0505 63	4812 0505 64	4812 0505 65

* Full details on measurement are available in the Safety and Operating Instruction of the product. It can be found on www.cpprintshop.com.

Drive Units

DRIVE UNITS	VDD 3000	VDG 3200
Engine	Lombardini® 15 LD 225	Honda® GX 160
Type	Diesel	Gasoline
Power kW (hp)	3.0 (4.1)	3.2 (4.4)
Speed rpm	2,900	3,600
Weight kg (lb)	46 (101)	30 (66)
Sound Power dB(A)*	79	75.7
Part Number	4812 0515 70	4812 0515 69

* Full details on measurement are available in the Safety and Operating Instruction of the product. It can be found on www.cpprintshop.com.

QUALITY ENGINES

Honda® gasoline and Lombardini® diesel engines provide reliable performance. The Honda engine includes an oil alert for easy maintenance.

REDUCED NOISE AND VIBRATION

Engine is mounted on rubber element to isolate vibration.

HEAVY-DUTY CONSTRUCTION

Both units feature solid frame protection with a protective plate to shield the engine. Gasoline unit has an easy-to-reach on/off switch.

QUICK-RELEASE COUPLING

Quick-release design makes it easy to connect/disconnect pokers.

TIP

CP electric pokers provide strong vibration to the concrete with limited noise level.



Effective and Efficient

CP electric pokers offer lower noise and require little maintenance. Just plug them in and get to work.

Effective and efficient are the words that best describe CP electric pokers. They're light and easy to handle, yet provide the vibration needed to remove air voids in the concrete. Fast startup, a wide radius of action and rapid acceleration for removal of air voids add to the effectiveness. Plus, the electric motor is highly efficient and the low voltage helps protect the operator.

CP electric pokers are specifically designed for use in medium to high slump concrete. The VPE series is used with a frequency converter or specific generators delivering 42V-3-200Hz.

ERGONOMIC DESIGN

The aluminum toggle switch box is easy to operate with one hand. And the unit is light and easy to handle, helping to reduce operator fatigue.

EASY MAINTENANCE

The quick-assembly design simplifies bearing replacement, and oil lubrication inside the vibrating element reduces maintenance. The end-cap includes an oil level mark for corrective maintenance when the bearing is changed.

EXTENDED REACH

With 10 m (33 ft) of cable and 5 m (16 ft) of hose, the operator has 15 m (49 ft) of total reach around the source.

LOW POWER CONSUMPTION

VPE pokers are powerful and fast yet require relatively low power, so they can be used with lower-output frequency converters (max. 11A).

RELIABLE STARTUP

A helical aluminum rotor ensures reliable startup.

MINIMIZED H/A VIBRATIONS

Shock and vibration absorption ensures the concrete receives the vibration, not the operator.

DURABLE CONSTRUCTION

One-piece rotor shaft features a steel eccentric and two front ball bearings lubricated with oil for longer life. A sealed stator also allows oil lubrication.

ELECTRIC POKERS

	VPE 40	VPE 50	VPE 60
Tube Diameter mm (in)	40 (1.6)	50 (2.0)	60 (2.4)
Tube Length mm (in)	255 (10.0)	284 (11.2)	330 (13.0)
Tube Weight kg (lb)	1.84 (4.0)	3.06 (6.7)	5.1 (11.2)
Frequency vpm	200–12,000	200–12,000	200–12,000
Ampere at 42V A	4	8	11
H/A Vibrations m/s ² *	1.8	3.28	3.23
Sound Power dB(A)*	86	87	95
Part Number	4812 0505 56	4812 0505 57	4812 0505 58

* Full details on measurement are available in the Safety and Operating Instruction of the product. It can be found on www.cpprintshop.com.

TIP

CP frequency converters and generators can run up to four pokers at one time for cost-efficient operation.



Portable Power When You Need It

VCE frequency converters are recommended for job sites where electricity is supplied. VCD and VCG generators provide a mobile solution for remote job sites.

Wherever the job takes you, CP frequency converters and generators bring the power. Depending on the model you choose, these units can run up to four VPE pokers simultaneously. And all models feature a robust design that protects critical components on the job site for longer service life.

Frequency Converters

ROBUST CONSTRUCTION

Models are mounted on solid frames with a dedicated socket box and feature heavy-duty housing, which minimizes vibration to the plugs.

RELIABILITY AND LONG LIFE

The VCE 800M has a single-phase asynchronous motor (230V-1-50-Hz) and the VCE 1800T and VCE 4700T have a three-phase asynchronous motor (400V-3-50Hz) for reliability and long life.



OVERLOAD PROTECTION

Switch with integrated overload protection helps ensure dependable operation.

HIGH OUTPUT STABILITY

Models are equipped with a high-output permanent magnet generator for lighter weight and high output stability. They are designed to run the VPE or any pokers working under 42V-3-200Hz.

JOBSITE FLEXIBILITY

Models are available with up to four outlets to run up to four VPE pokers simultaneously.

FREQUENCY CONVERTERS	VCE 800M	VCE 1800T	VCE 4700T
Power kVA	0.8	1.8	4.7
Output Density at 42V A	11	25	67
Number of Phases (Primary Voltage)	1	3	3
Number of Outlets	1	2	4
Weight kg (lb)	18 (40)	31 (68)	70 (154)
Protection Index	IP55	IP55	IP55
Sound Power dB(A)*	76	80	85
Part Number 230V-1-50Hz	4812 0515 85	—	—
Part Number 400V-3-50Hz	—	4812 0515 87	4812 0515 90

* Full details on measurement are available in the Safety and Operating Instruction of the product. It can be found on www.cpprintshop.com.

Generators

ROBUST CONSTRUCTION

All models feature strong frame protection and a dedicated control box mounted on a rubber element, which minimizes vibration to the plugs.

HIGH OUTPUT STABILITY

Models are equipped with a high-output permanent magnet generator for lighter weight and high output stability.



EASY SHUT-OFF

All models include a kill ignition switch on the control box.

RELIABLE OPERATION

Honda® gasoline and Kohler® diesel engines deliver reliable performance.

GENERATORS	VCG 1800	VCD 2400	VCG 4700	VCD 4700
Engine 4 stroke – manual start	Honda® GX 160	Kohler® KD 225	Honda GX 270	Lombardini® 15 LD 350
Fuel	Gasoline	Diesel	Gasoline	Diesel
Max Power at 3,000 rpm kW (hp)	3.3 (4.4)	3.3 (4.4)	5.9 (9.0)	5.2 (7.0)
Standby Power kVA	1.8	2.4	4.7	4.6
Number of Outlets	2	3	4	4
Amperage A	25	33	67	65
Voltage V	42V-3-200Hz	42V-3-200Hz	42V-3-200Hz	42V-3-200Hz
Weight kg (lb)	45 (99)	68 (150)	85 (187)	95 (209)
Sound Power dB(A)*	93	104	96	107
Wheels	Optional	Optional	Yes	Yes
Part Number	4812 0514 54	4812 0514 55	4812 0514 56	4812 0514 57

* Full details on measurement are available in the Safety and Operating Instruction of the product. It can be found on www.cpprintshop.com.

TIP

A single air compressor can run several pneumatic tools for greater productivity on the job site.

Power with **Flexibility**

From the smallest job to the largest, CP has an extensive range of pneumatic pokers to match.

Powered by an air compressor, CP pneumatic pokers deliver high-speed vibration and are cooled by compressed air for convenient use — even in remote places where no electricity is available. And because they have few moving parts, they're robust and built to last with little maintenance other than lubrication.

High-performance centrifugal force makes CP pneumatic pokers well suited for all types of concrete from low to high slump.

LOW H/A VIBRATIONS

The multi-layer hose design provides an exhaust channel. The air inlet hose does not rotate, minimizing vibration to the hand.

LESS RISK OF BLOCKAGE INSIDE REINFORCEMENT BARS

Long hose is suitable for walls and columns. Models are available with 2 or 4 m (7 or 13 ft) of hose for most wall/column applications.

ROBUST CONSTRUCTION

Design features few moving parts for simpler maintenance and longer life.

MAXIMUM VERSATILITY

High-performance centrifugal force allows CP pneumatic pokers to be used in all consistencies of concrete, from low to high slump.

AIR-COOLED OPERATION

Pneumatic pokers are cooled by compressed air instead of by immersion in the concrete, so they can be used for longer periods and in applications such as walls and columns. This also contributes to longer life.

EASY OPERATION

Simply turn the ball stop handle to start or stop airflow to the poker. Air is exhausted through a built-in noise reducer on the back of the handle.

OPTIONAL OIL LUBRICATION

Optional oil lubricator is available.
(Part Number 8900 0050 02)



RELIABLE PORTABLE POWER

CP offers a full line of portable air compressors to suit a range of job site requirements.

PNEUMATIC POKERS

	VPP 27	VPP 37	VPP 47	VPP 57	VPP 67	VPP 77
Tube Diameter mm (in)	27 (1.1)	37 (1.5)	47 (1.9)	57 (2.2)	67 (2.6)	77 (3.0)
Tube Length mm (in)	254 (10.0)	267 (10.5)	316 (12.4)	344 (13.5)	365 (14.3)	398 (15.7)
Tube Weight kg (lb)	0.7 (1.5)	1.5 (3)	2.8 (6)	4.5 (10)	7.9 (17)	8.9 (20)
Frequency vpm	12,000	12,000	12,000	12,000	12,000	12,000
Air Consumption l/s cfm m³/min	6 12.7 0.36	7.7 16.2 0.46	11.7 24.7 0.7	16.7 35.3 1	16.7 35.3 1	21.7 45.9 1.3
H/A Vibrations m/s²*	0.5	1.0	2.4	2.1	2.1	2.4
Sound Power dB(A)*	84.5	89.2	95.8	95	94	98
Part Number Hose Length – 2 m (7 ft)	4700 1174 40	4700 1174 41	4700 1174 42	4700 1174 43	4700 1174 44	4700 1174 45
Part Number Hose Length – 4 m (13 ft)	4812 0515 79	4812 0515 80	4812 0515 81	4812 0515 82	4812 0515 83	4812 0515 84

* Full details on measurement are available in the Safety and Operating Instruction of the product. It can be found on www.cpprintshop.com.



TIP

After wet concrete has been vibrated a walk-behind screed is used to level the surface of the concrete.

Leveling **Made Easy**

Leveling fresh concrete doesn't have to wear you down. CP walk-behind screeds are light and easy to handle.

CP's walk-behind screeds are designed to provide a consistent, even surface without any guide or supporting tube. They're equipped with reliable Honda® engines and a rubber element to reduce H/A Vibrations. Plus, the ignition switch and throttle control are within easy reach for the operator to make quick adjustments.

The LBG 1200 hand-held screed provides surface vibration only. It's suitable for slabs of all sizes and medium to high slump concrete. The LBG 800 bull float screed provides deeper vibration and leveling in one step. It's recommended for smaller slabs and low to high slump concrete.

Bull Float Screed

EASY OPERATION AND STOP

Kill ignition switch makes it easy to stop the engine.

EASY TO USE AND MANEUVER

Transportation handle makes it easy to load, unload and carry the unit.

RUBBER ENGINE PROTECTION

Rubber engine and eccentric protection helps prevent damage.

LONG REACH FROM OUTSIDE CONCRETE

Handle has three snap-lock sections, extending up to 4.5 m (14.8 ft) long.

ENGINE SPEED ADJUSTMENT

Throttle control allows operator to adjust the engine speed.

FORWARD OR BACKWARD USE

Twist pitch system allows operator to adjust the pitch +/-15° to work forward or backward.

LBG 800

Hand-Held Screed

ERGONOMIC HANDLES

Adjustable grip handles place throttle control and kill ignition switch close to operator's hands. Handle height is also adjustable for operator comfort.

RELIABLE ENGINE

Quality Honda® engine provides reliable performance.

IDLE WITHOUT VIBRATION

Centrifugal clutch allows screed to be left on idle speed without vibration.

SOLID SHAFT CONSTRUCTION

De-vibrating rubber element adds reliability.

SUPPORTING STAND

Stand supports the unit when not in use so it doesn't drop on the concrete.

LBG 1200

INTERCHANGEABLE PROFILES

Choose from seven lightweight, interchangeable aluminum profiles ranging from 1.2 to 4.9 m (4-16 ft). Simply tighten two bolts to mount the profile to the vibrating unit.

WALK-BEHIND SCREEDS

	LBG 800	LBG 1200
Engine 4 stroke – manual start	Honda® GX25	Honda GX35
Fuel	Gasoline	Gasoline
Max Power kW (hp)	0.8 (1.1)	1.0 (1.3)
Rated Speed rpm	3000	9500
Net Weight kg (lb)	18 (40)	13 (29)
Handle Type	Long (up to 4.5 m / 15 ft)	Short
Profile Length m (ft)	2 (7)	See chart at right ¹
H/A Vibrations m/s ² *	3.89	9
Sound Power dB(A)*	80	50
Part Number	4812 0550 09	4812 0550 12

* Full details on measurement are available in the Safety and Operating Instruction of the product. It can be found on www.cpprintshop.com.

¹ Profiles and vibrating unit are ordered separately.

PROFILES FOR LBG 1200

		Length	Weight
LBG 1200 12	Part No. 4812 0550 13	1.2 m (4 ft)	2.9 kg (6 lb)
LBG 1200 18	Part No. 4812 0550 14	1.8 m (6 ft)	4.4 kg (10 lb)
LBG 1200 24	Part No. 4812 0550 15	2.4 m (8 ft)	5.8 kg (13 lb)
LBG 1200 30	Part No. 4812 0550 16	3.0 m (10 ft)	7.3 kg (16 lb)
LBG 1200 37	Part No. 4812 0550 17	3.7 m (12 ft)	8.7 kg (19 lb)
LBG 1200 43	Part No. 4812 0550 18	4.3 m (14 ft)	10.2 kg (23 lb)
LBG 1200 49	Part No. 4812 0550 19	4.9 m (16 ft)	11.6 kg (26 lb)

TIP

The plastic guide strip creates a joint, which controls crack formation and reduces the need for floor sawing.

Save Time and Labor

CombiForm is a lightweight, leave-in-place screed rail system that can save time and transport costs compared to traditional methods.

The CombiForm screed rail system is cast into the concrete, providing an efficient leveling solution. It saves time and labor because it's easy to set up, and it doesn't require the concrete to be pre-leveled before screeding. Simply connect sections of CombiForm rail to create the span you need and level them with the adjusting screws. Once the rails are set, the operator pulls the screed on top of them to achieve a flat and level floor. In addition, the plastic strip creates an expansion joint that can eliminate the need to use a floor saw. If a floor saw is used, the strip can be removed and the space used as a guide to cut the concrete.

This versatile solution is suitable for all beddings and all dimensions of reinforcement bars can be used. In addition, clips, screws and other level adjustment accessories are available separately. *(See Accessories)*

SIMPLE TO USE

The rail system is lightweight and easy to set in place.

FAST, ACCURATE SCREEDING

The plastic guide strip allows the surface vibrator to run smoothly over the surface for a level finish in less time.

LESS WORK

CombiForm stays inside the poured concrete and creates an expansion joint that can eliminate the need for floor sawing.

EFFICIENT DESIGN

Concrete efficiently penetrates through the holes as it is vibrated for a strong finished product.

EASY TO USE

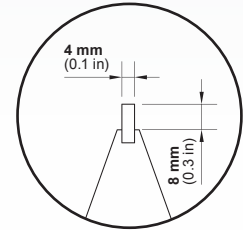
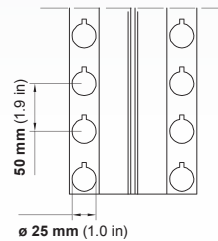
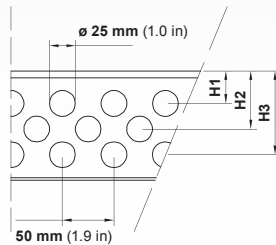
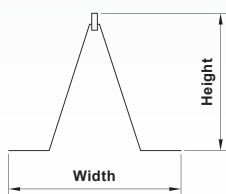
Sections can be cut to the proper length and assembled immediately prior to concreting.

LESS STORAGE SPACE REQUIRED

CombiForm sections are stackable for compact storage.

COMBIFORM	C 25	C 45	C 65	C 85	C 105	C 125	C 145
Length m (ft)	3.5 (12)	3.5 (12)	3.5 (12)	3.5 (12)	3.5 (12)	3.5 (12)	3.5 (12)
Height mm (in)	25 (1.0)	45 (1.7)	65 (2.6)	85 (3.3)	105 (4.1)	125 (4.9)	145 (5.7)
H-1 mm (in)	–	30 (1.2)	28 (1.1)	31 (1.2)	32 (1.3)	32 (1.3)	32 (1.3)
H-2 mm (in)	–	–	67 (2.6)	49 (1.9)	53 (2.1)	64 (2.5)	75 (3.0)
H-3 mm (in)	–	–	–	67 (2.6)	88 (3.5)	109 (4.3)	127 (5.0)
Width mm (in)	80 (3.1)	90 (3.5)	105 (4.1)	115 (4.5)	130 (5.1)	135 (5.3)	160 (6.3)
Weight/m kg (lb)	0.72 (2)	0.77 (2)	1.0 (2)	1.13 (3)	1.14 (3)	1.70 (4)	2.20 (5)
Weight/3.5 m kg (lb)	2.5 (6)	2.7 (6)	3.5 (8)	4.0 (9)	4.9 (11)	6.0 (13)	7.7 (17)
Part Number	4700 0021 36	4700 0019 72	4700 0019 91	4700 0019 73	4700 0019 74	4700 0019 75	4700 0019 76
Part Number 1 piece Locking Clip	–	4700 0028 09	4700 0028 10	4700 0028 11	4700 0028 12	4700 0028 13	4700 0028 14

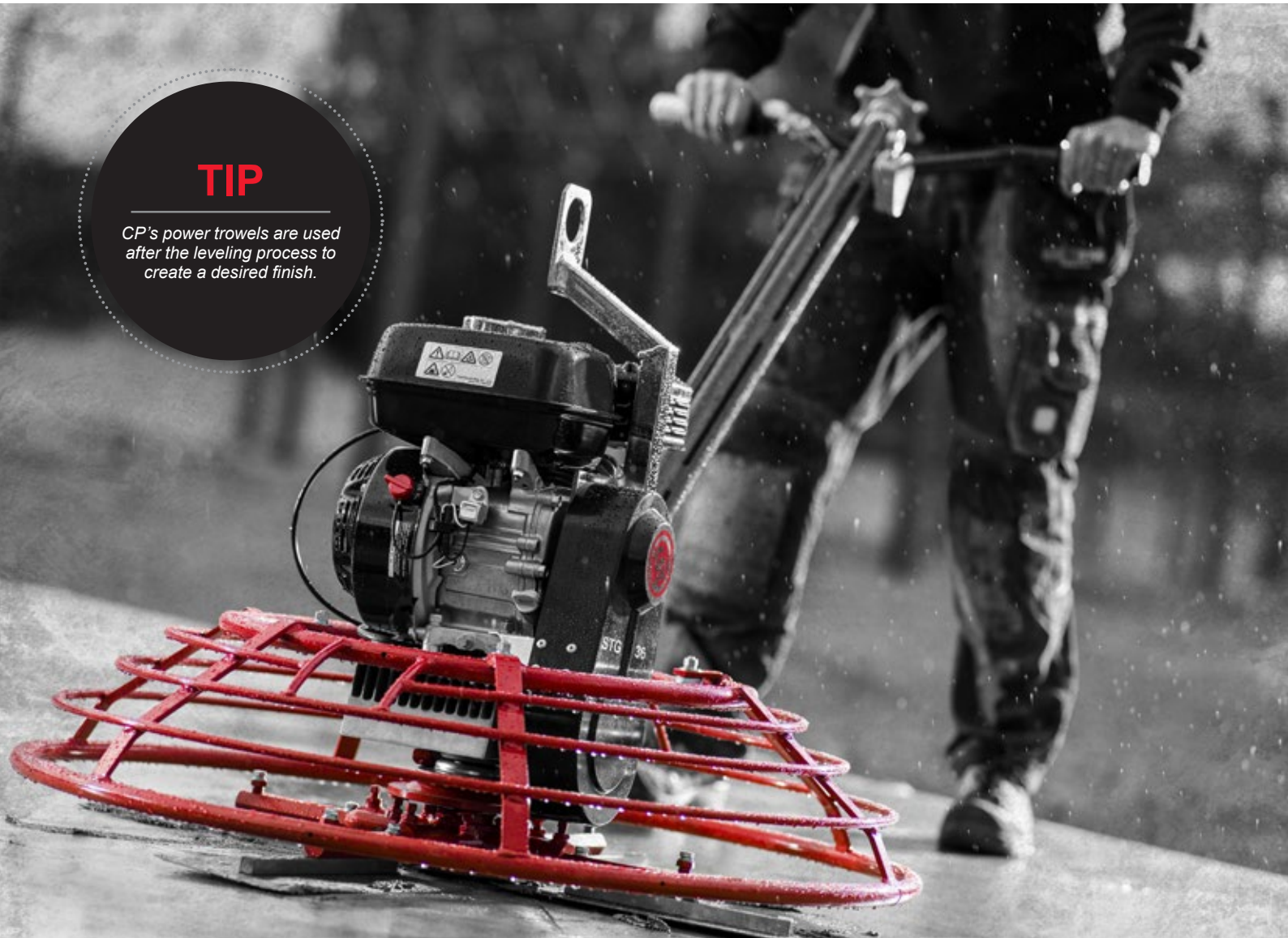
Note: CombiForm comes in 3.5 m sections and are sold in boxes of 10 sections. Orders must be placed in multiples of 10 (1 part number = 1 section). Locking clips are included with each 3.5 m CombiForm section to support normal beam loads.



ACCESSORIES	Ground Plate	Screw mm (in)		Support mm (in)		Adjustment Tool mm (in)		Leveling Stick	Elevating Strip mm x m (in x ft)	
Number of Pieces	1	100		1		1		1	1	
Part Number	4700 0020 01	25 (1.0)	4700 0022 06	100 (3.9)	4700 0022 09	440 (17.3)	4700 0020 28	4700 0020 29	30 x 3.5 (14 x 12)	4700 0022 08
	—	60 (2.4)	4700 0020 00	120 (4.7)	4700 0022 10	1,300 (51.1)	4700 0020 27	—	—	—
	—	90 (3.5)	4700 0022 07	140 (5.5)	4700 0021 04	for handheld drill	3382 0106 42	—	—	—
	—	—	—	160 (6.3)	4700 0022 11	—	—	—	—	—

TIP

CP's power trowels are used after the leveling process to create a desired finish.

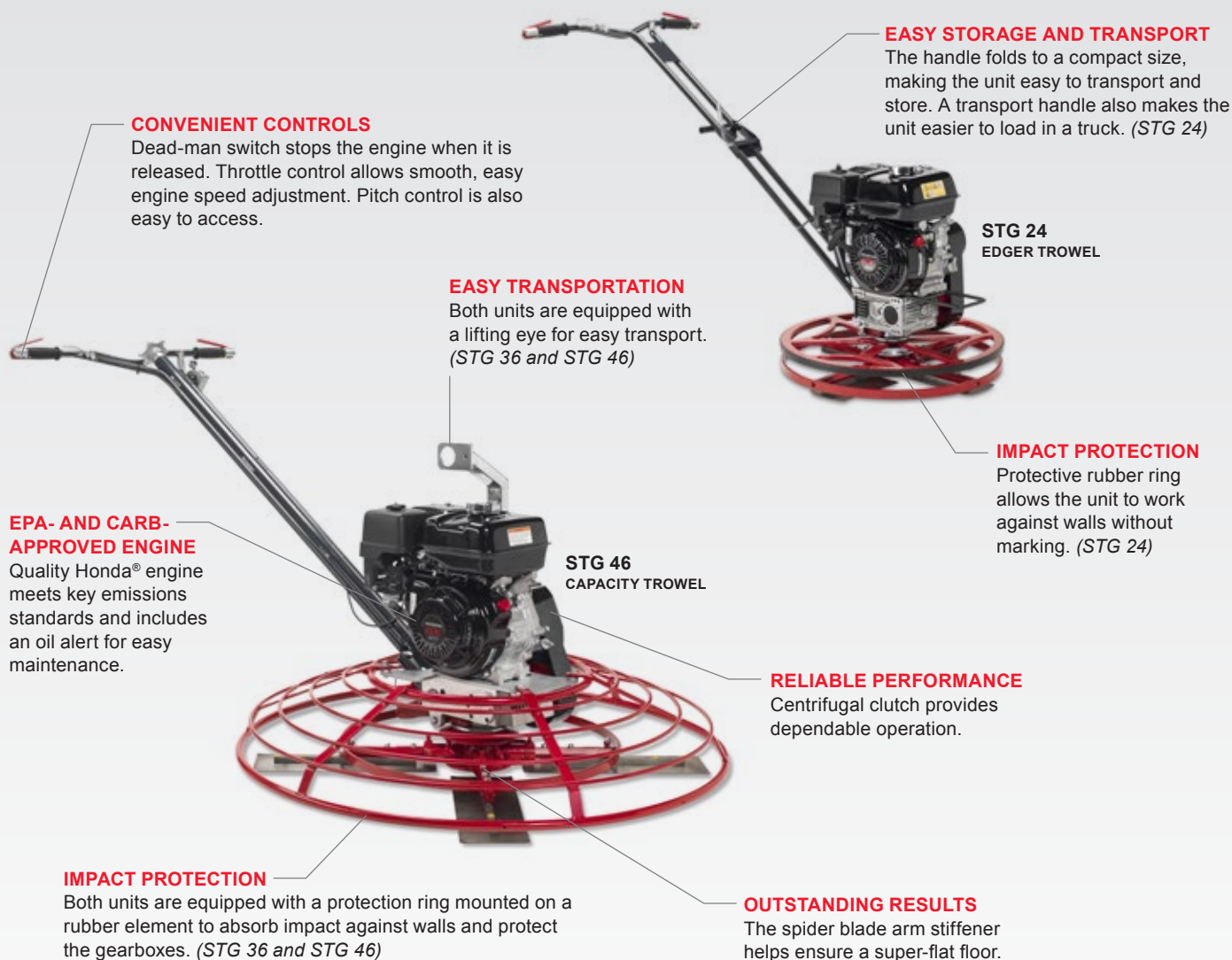


Smooth Finish

For applications that require a smoother finished surface, CP's power trowels are the answer.

From small edging tasks to larger floors, CP has a power trowel for the job. The STG series helps your crew stay productive while creating the long-lasting, durable finish you require. They're designed for reliable performance and low maintenance, providing an efficient solution for troweling applications.

STG power trowels are used on concrete slabs, industrial floors, parking lots and alleys. The STG 24 is a small power float edger ideal for smaller slabs and finishing edges, especially in confined spaces and next to walls. STG 36 and 46 are higher capacity trowels designed for larger slabs.



POWER TROWELS	STG 24	STG 36	STG 46
Engine 4-stroke – manual start	Honda® GX 120	Honda GX 160	Honda GX 270
Fuel	Gasoline	Gasoline	Gasoline
Max. Power kW (hp)	3.0 (4.0)	4.1 (5.5)	6.7 (9.0)
Rated Speed rpm	130	130	130
Net Weight kg (lb)	54 (120)	76 (170)	105 (203)
Handle Type	short/foldable	short/fixed	short/fixed
Blade Qty.	4 (stiffener ring)	4	4 (stiffener ring)
Pitch	Twist	Twist	Twist
Diameter mm (in)	600 (24)	900 (36)	1,200 (46)
H/A Vibrations m/s ² *	3.6	3.6	3.6
Sound Power dB(A)*	87	90.1	90.1
Part Number	4812 0550 00	4812 0550 01	4812 0550 02
Blades (set of 4)	4812 0550 03	4812 0550 04	4812 0550 05
Discs (1 unit)	(Galvanized) 4812 0550 06	(Painted) 4812 0550 07	(Painted) 4812 0550 08

* Full details on measurement are available in the Safety and Operating Instruction of the product. It can be found on www.cpprintshop.com.



Screeded Surfaces (rough)
LBG 800 or LBG 1200



Floated Surfaces (rough)
STG 24, STG 36 or STG 46 + floating disc



Steel Trowelled Surfaces (smooth)
STG 24, STG 36 or STG 46
+ troweling blades

TIP

CP floor saws are suitable for cutting expansion joints as well as road repair and asphalt road maintenance.



Straight, Stable Cuts

Cutting expansion joints doesn't have to be back-breaking work. CP floor saws are designed with the operator in mind.

CP concrete and asphalt floor saws are designed to deliver a straight, stable cut. They're also operator-friendly, thanks to adjustable handles and perfectly positioned controls. Both gasoline and diesel models are available, and all come with the reliability and simple maintenance you expect from CP.

CP floor saws offer a maximum cutting depth of 150 mm (5.9 in) to fit most job requirements. Suitable for cutting expansion joints, they can also be used to cut asphalt for road maintenance and as an alternative to jack hammers.

OPERATOR-FRIENDLY DESIGN

Handle offers three-point adjustment for operator comfort. Throttle control, ignition kill switch and safety instructions are all within easy reach of the operator.

CONTROL AND STABILITY

When the cutting wheel plunge is turned, the blade plunges inside the material to be cut by 1 cm (.04 in) per revolution. The wheel plunge design includes a brake and offers excellent control as well as a stable, in-depth cut.

BLADE COOLING

Steel blade guard with watering fork keeps the blade cool during cutting. The 30L (8 gal) water tank provides good capacity to save time on refilling.

SIMPLIFIED MAINTENANCE

Poly V-belt with steel belt guard allows excellent torque and easy service. Plus, the overall design has fewer bolts and requires only greasing and engine maintenance.

ROBUST CONSTRUCTION

High-quality wheels and a solid, rigid frame provide long-lasting durability. The frame includes a lifting eye for convenient transport.

STRAIGHT CUTS

Front pointer guides the operator for straight cutting.



SCD 450

FLOOR SAWS	SCG 350	SCD 450
Standard Disc Size mm (in)	350 (13.7)	450 (17.7)
Maximum Cutting Depth mm (in)	100 (3.9)	150 (5.9)
Engine 4 stroke – manual start	Kohler® CH395	Lombardini® 15 LD 350
Fuel	Gasoline	Diesel
Max. Power kW (hp)	6.7 (9.0)	5.2 (7.0)
Water Tank Capacity l (gal)	30 (8.0)	30 (8.0)
Net Weight kg (lb)	98 (216)	100 (220)
Handle Type	Adjustable	Adjustable
H/A Vibrations m/s ² *	4.15 (13.6)	12.37 (40.6)
Sound Power dB(A)*	115	115
Part Number	4812 0515 92	4812 0515 93

* Full details on measurement are available in the Safety and Operating Instruction of the product. It can be found on www.cpprintshop.com.

DIAMOND DISKS	350F	350C	350A	450F	450C	450A
Blade Diameter mm (in)	350 (13.8)	350 (13.8)	350 (13.8)	450 (17.7)	450 (17.7)	450 (17.7)
Pieces/pack	1	1	1	1	1	1
Blade Type	for fresh concrete	for cured concrete	for asphalt	for fresh concrete	for cured concrete	for asphalt
Part Number	3382 1002 75	3382 1002 74	3382 1002 76	3382 1002 78	3382 1002 77	3382 1002 79



Over 100 Years of Experience

Since 1901 the Chicago Pneumatic name has represented high-performance tools and Equipment designed for an extensive range of applications. Today, Chicago Pneumatic has a global reach, with local customer centers around the world. Chicago Pneumatic tools and air compressors are tailored to the needs of the industrial, vehicle service, and construction markets. Every day we develop and manufacture new products that are meant to meet your demands not only today, but tomorrow as well.

For more information, please contact your CP partner:

Use only authorized parts. Any damage or malfunction caused by the use of unauthorized parts is not covered by Warranty or Product Liability.